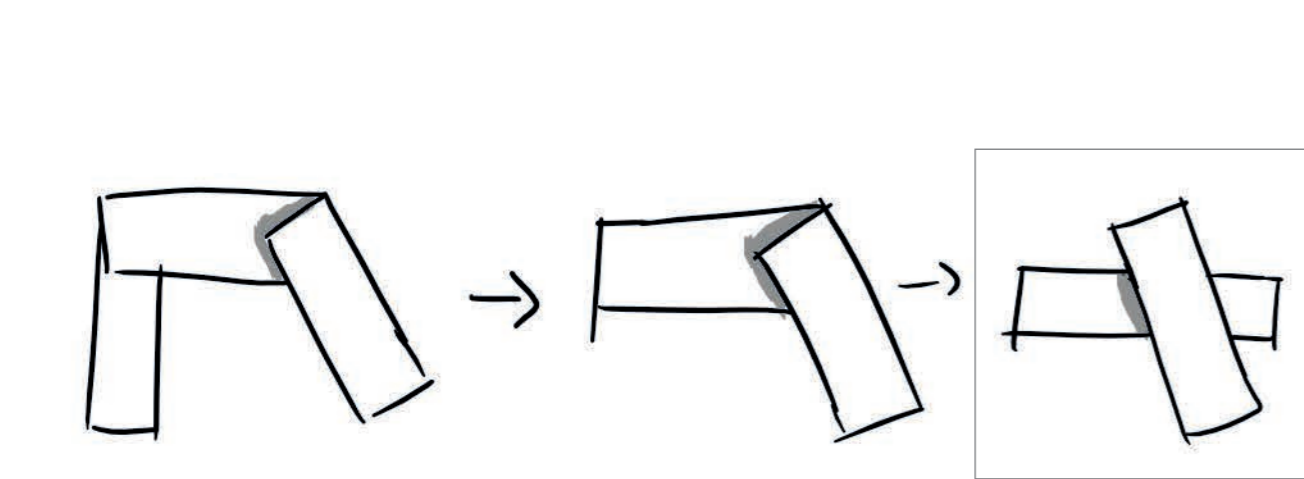




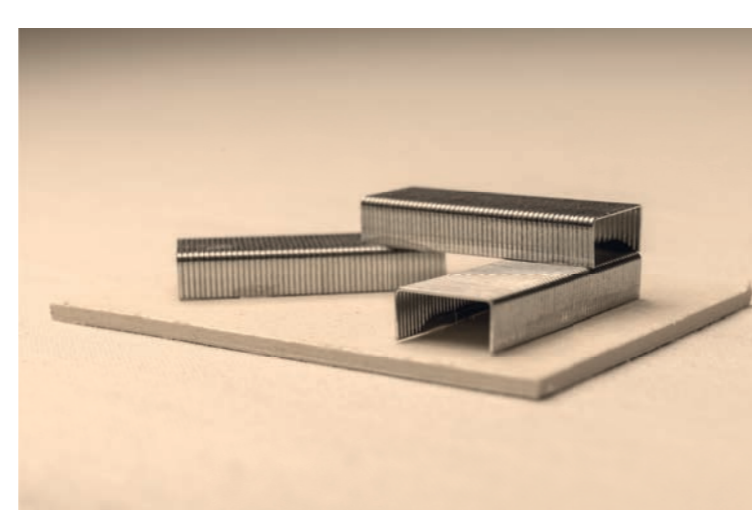
Naturkundemuseum am Steinbrücker Teich

Entwurf III - Gebäudelehre I und Wohnungsbau II

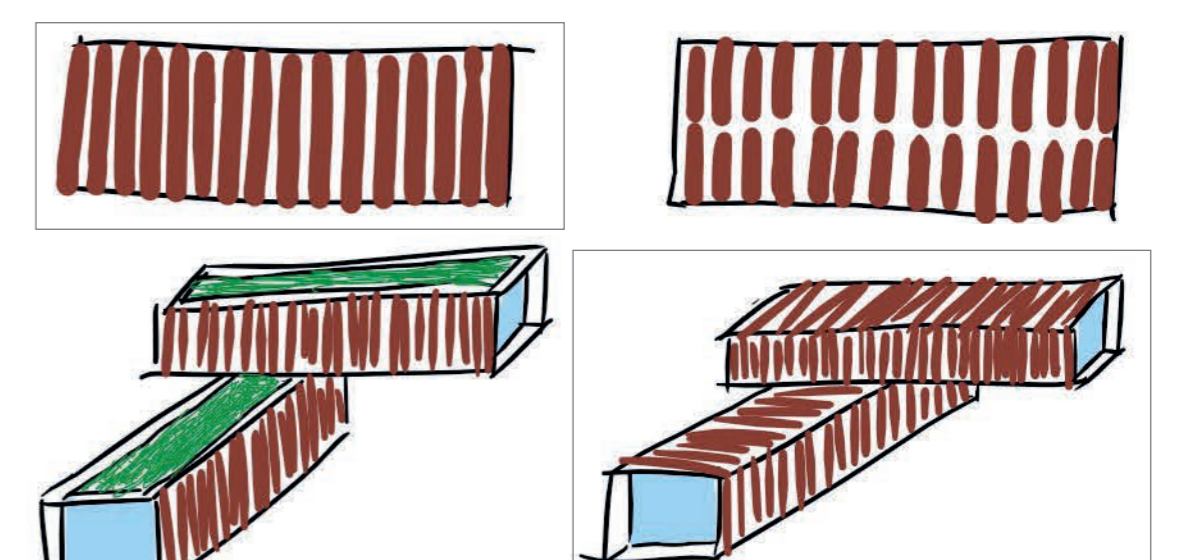
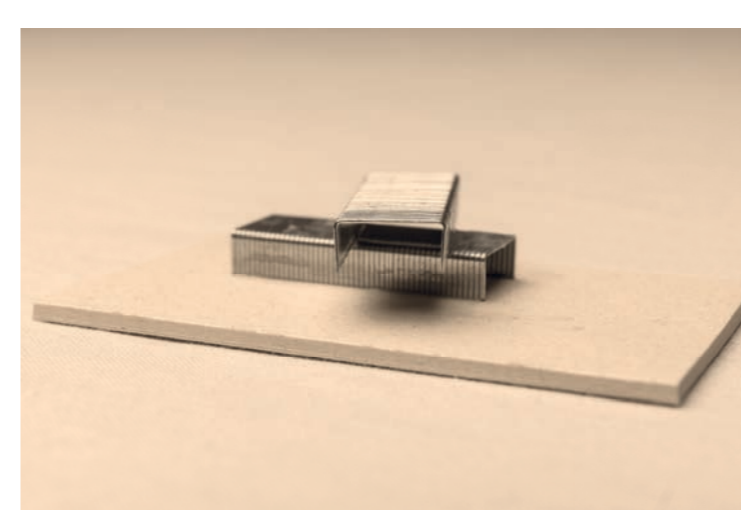
ORT VOLUMEN RAUM PROGRAMM



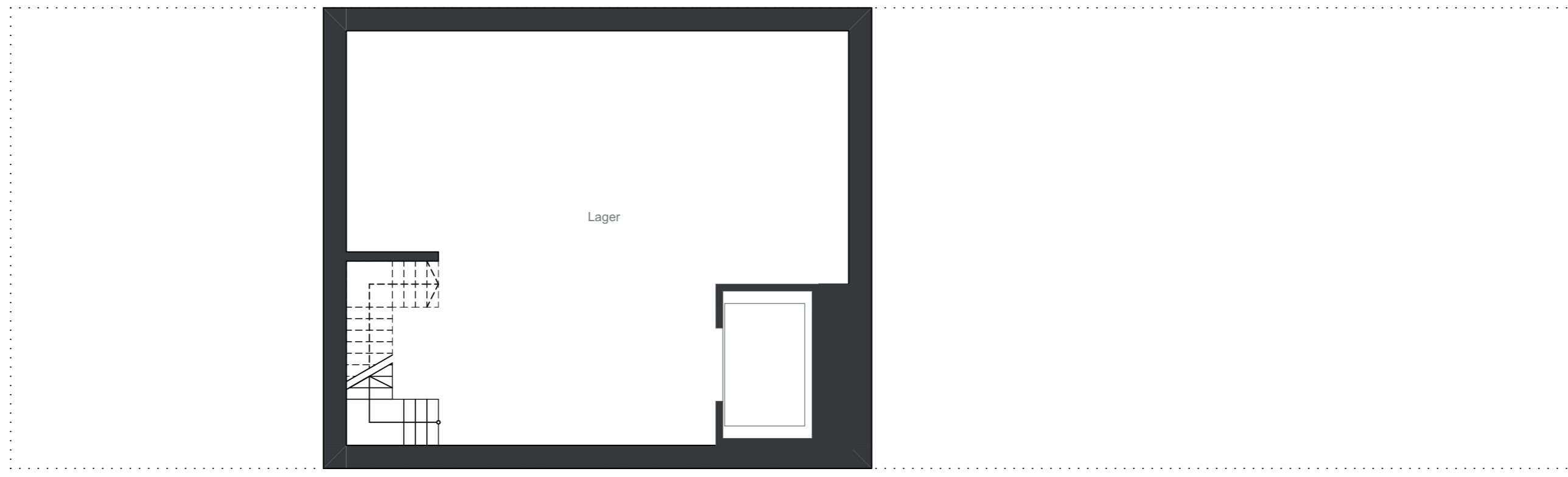
Volumenentwicklung



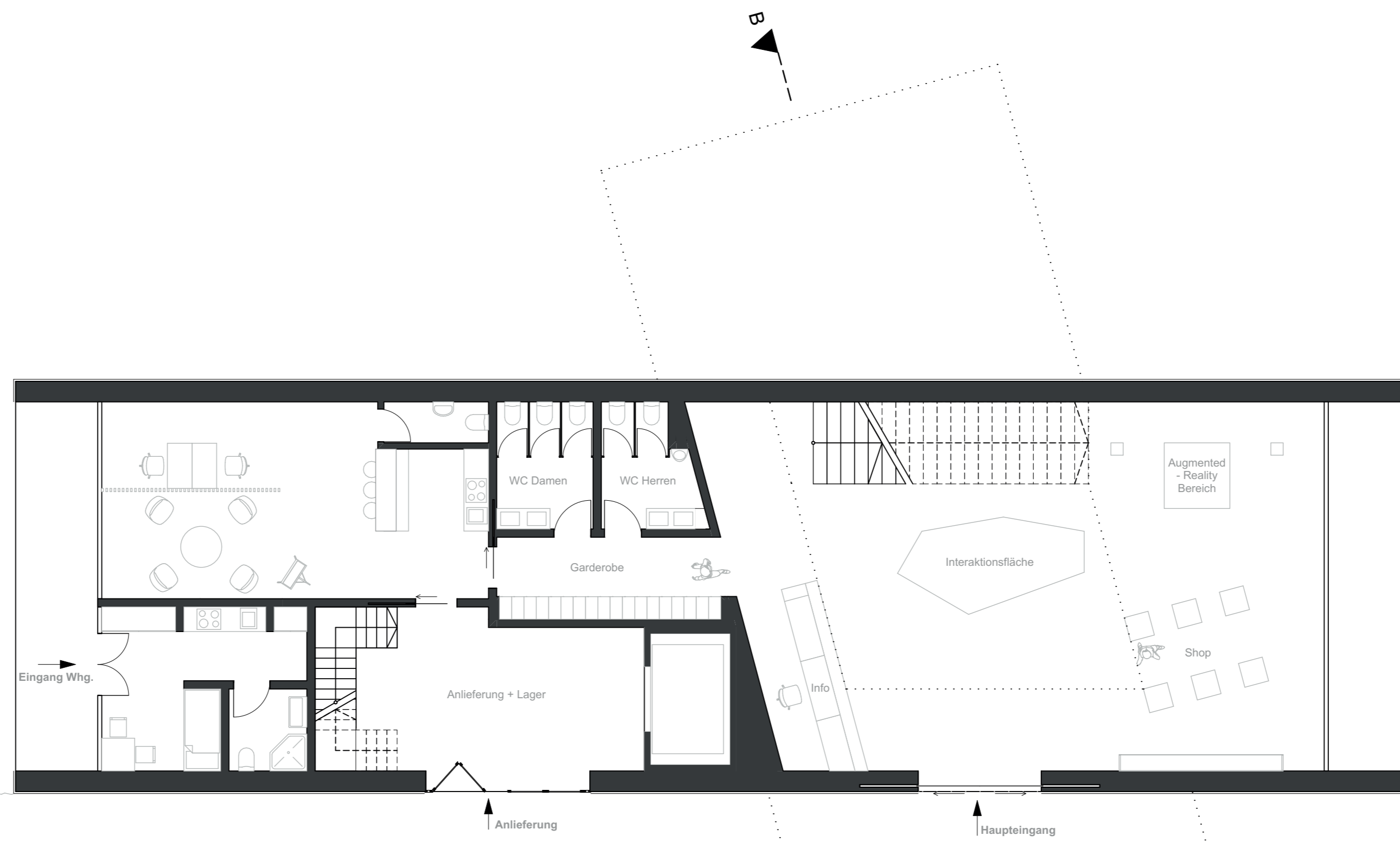
erste Volumenmodelle



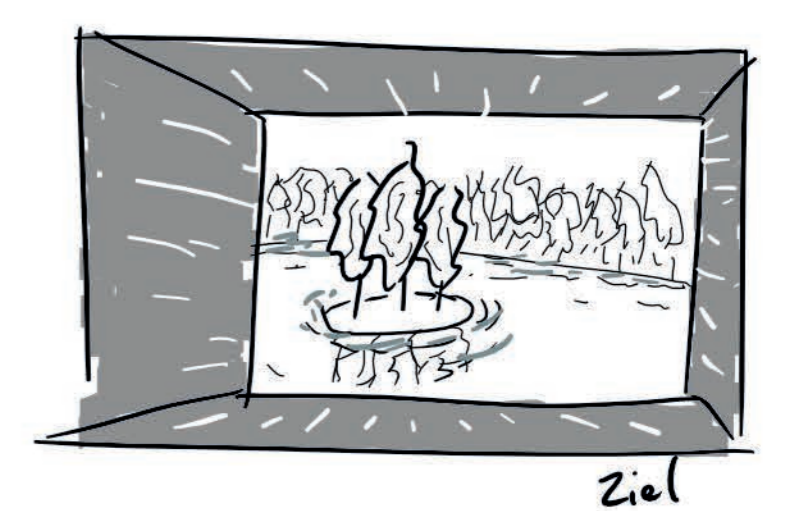
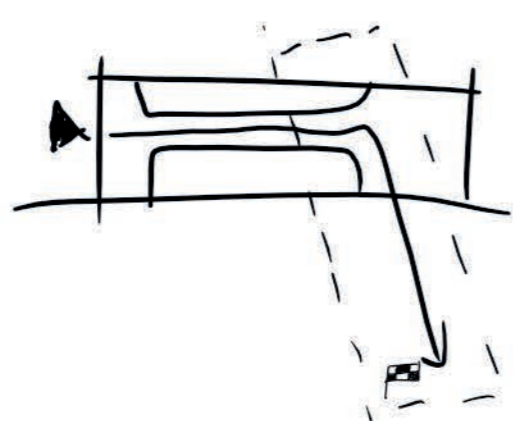
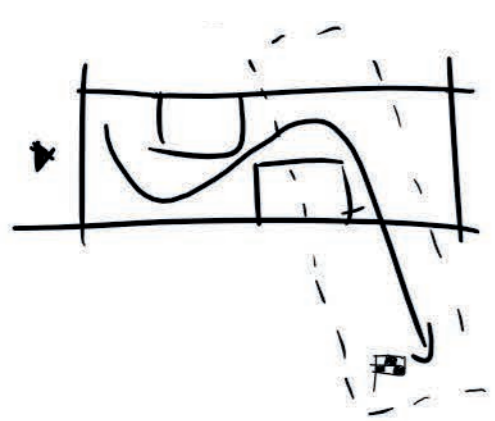
Fassaden-/ Dachgestaltung



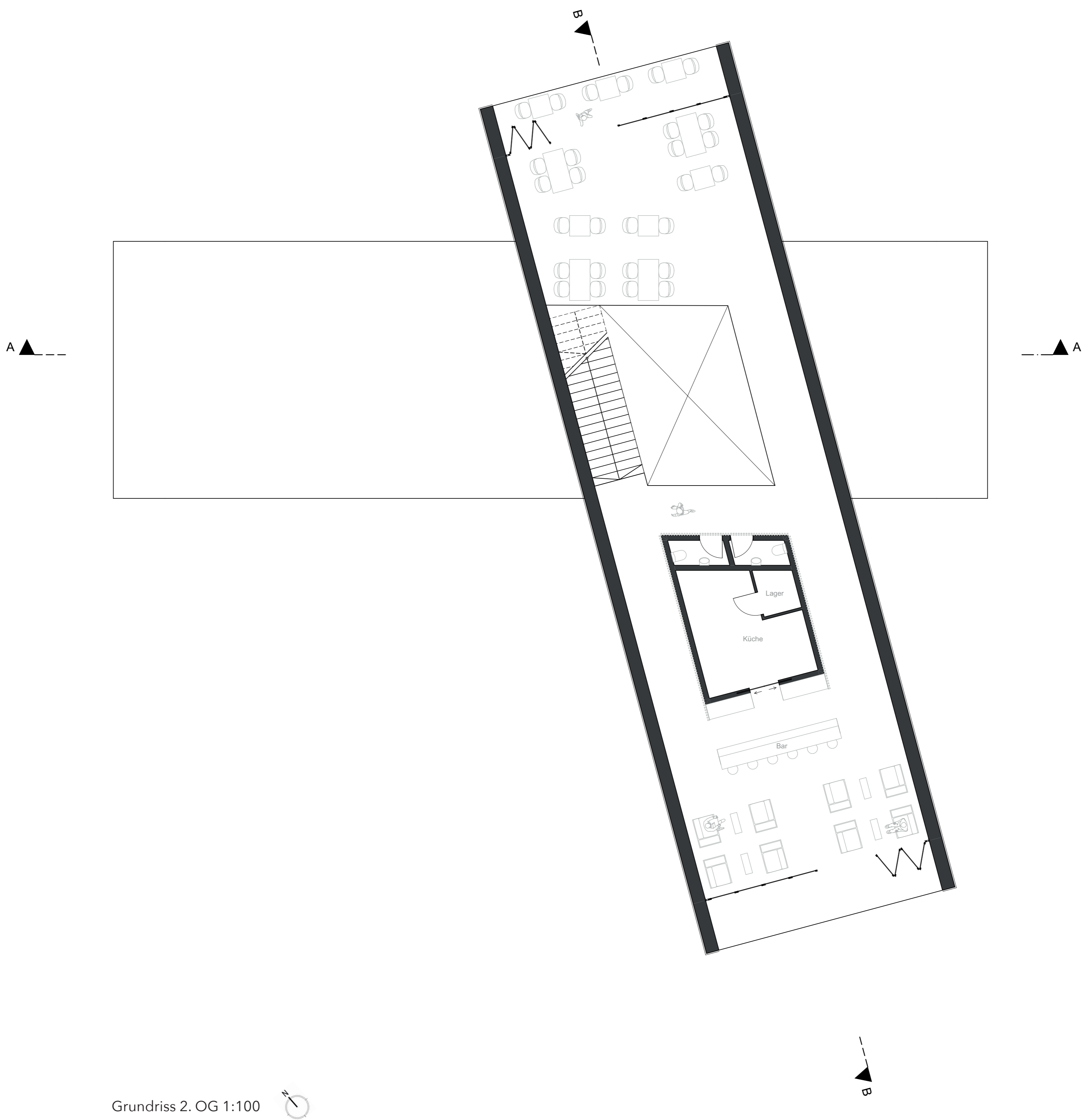
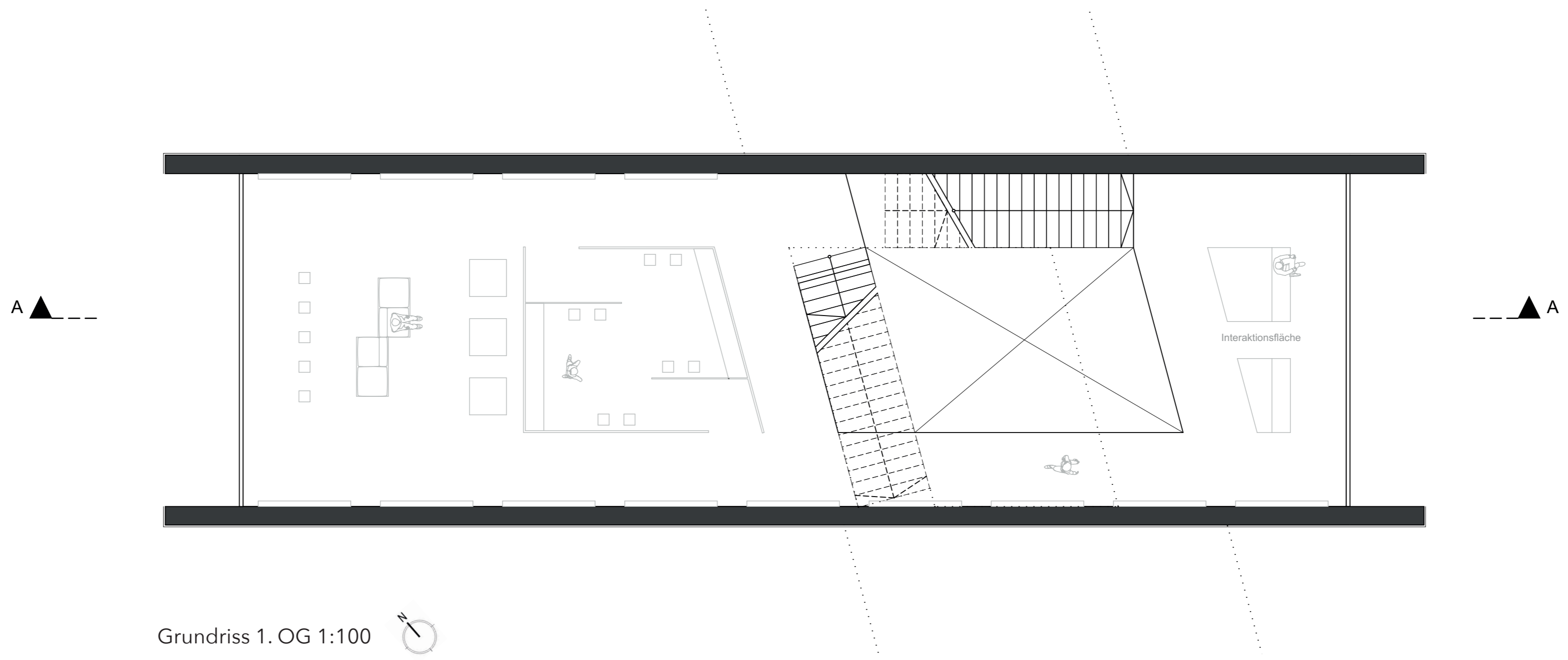
Grundriss UG 1:100



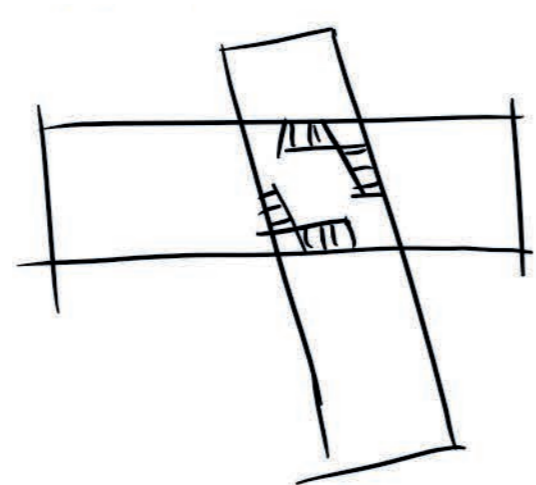
Grundriss EG 1:100



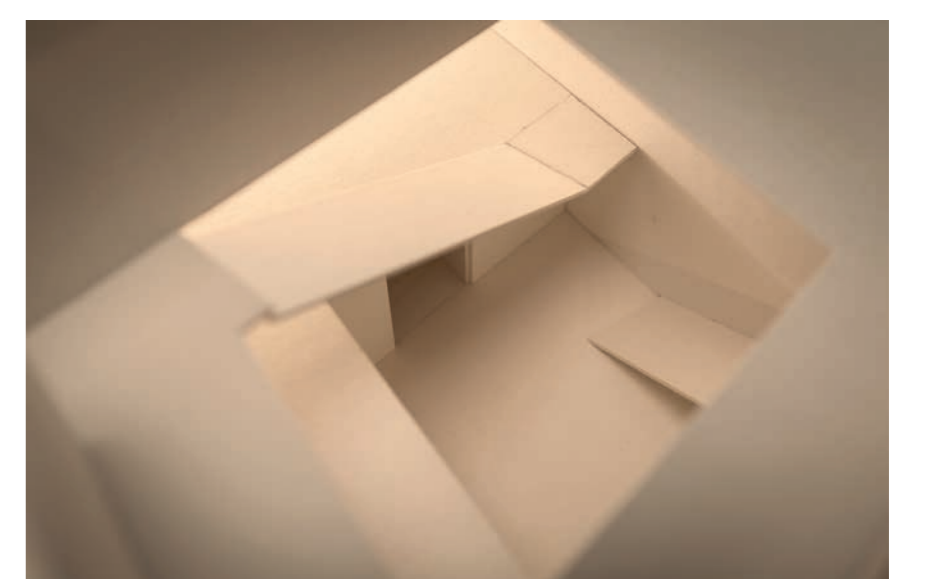
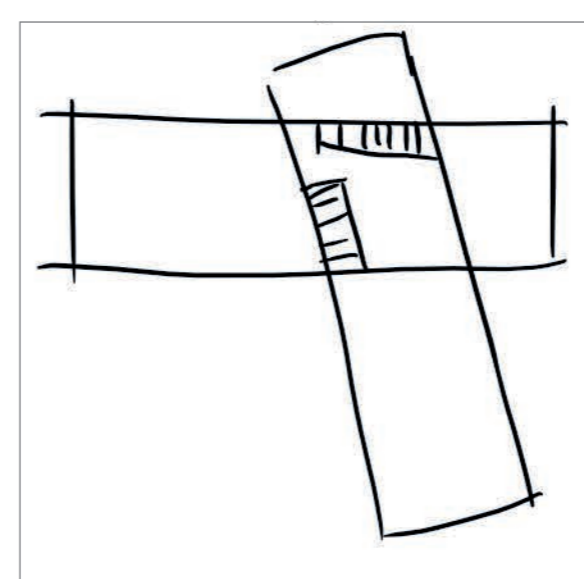
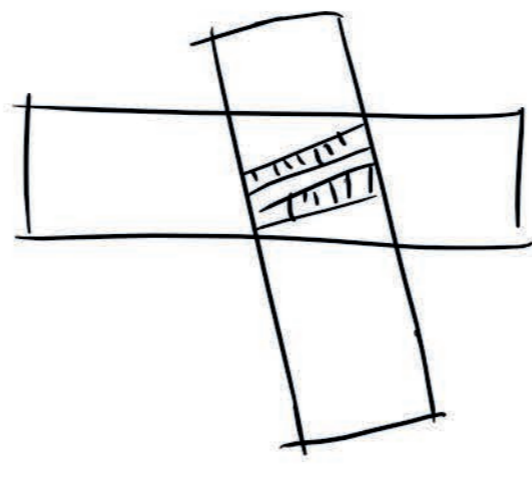
Wegführungsentwicklung



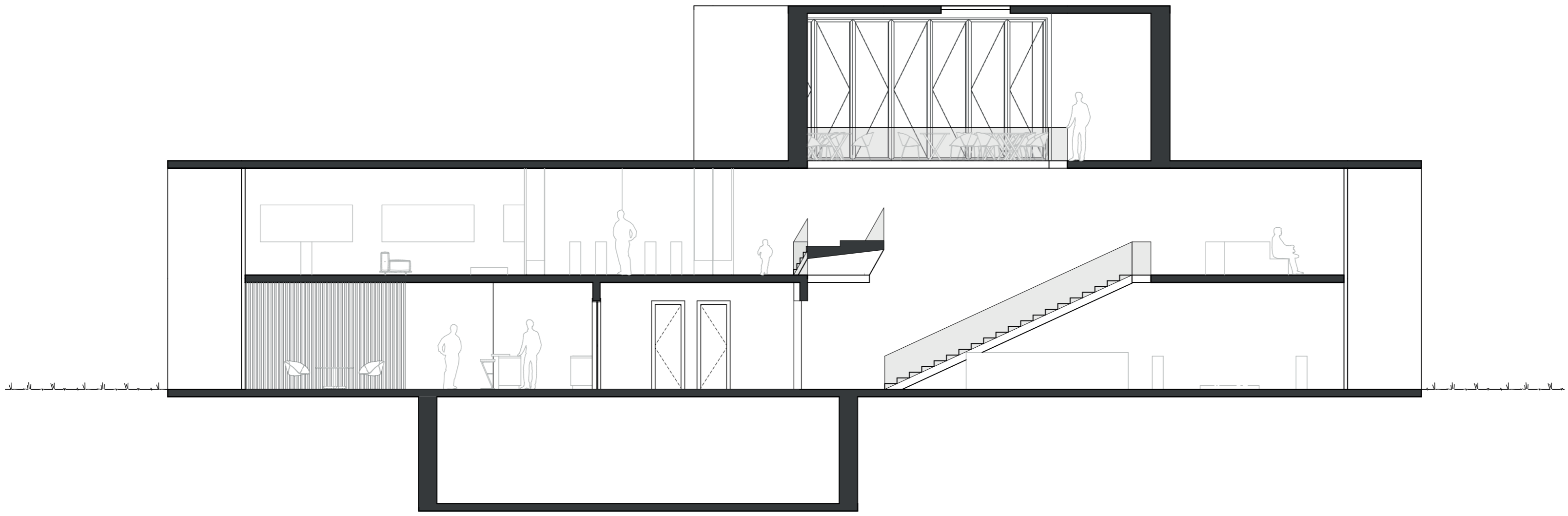
Foyer Innenansicht



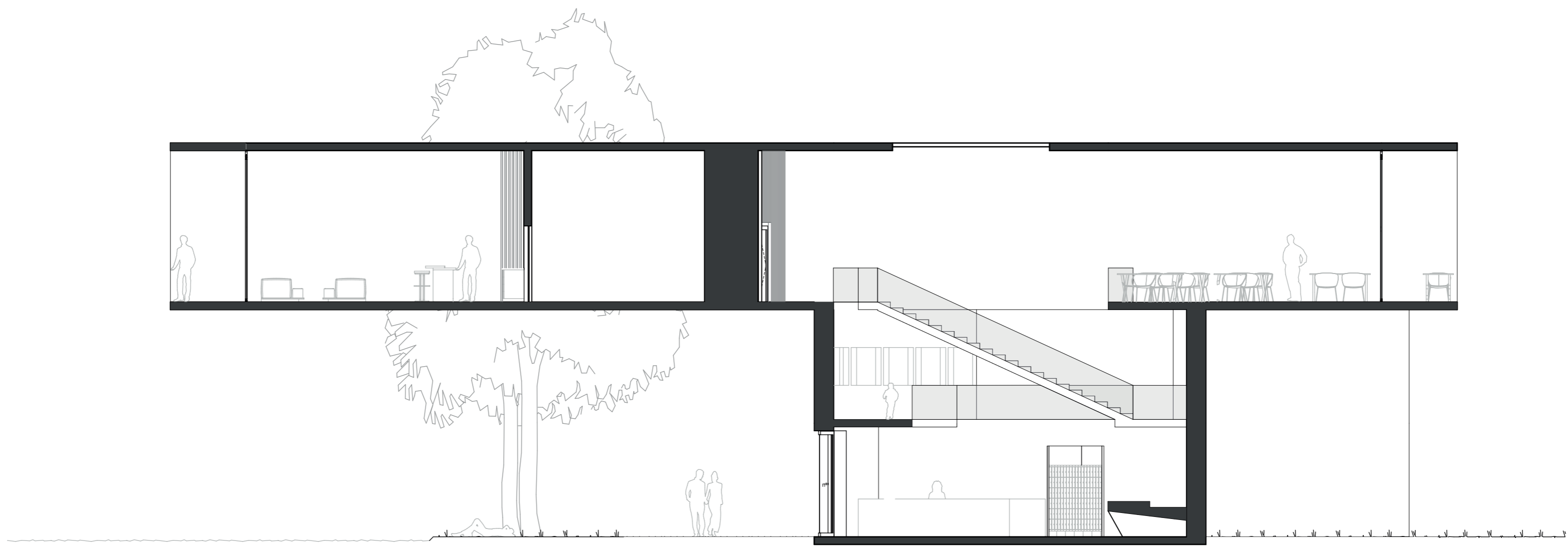
Treppen Entwicklung



Treppenanlage Innenansicht aus dem 2. OG



Schnitt A-A 1:100



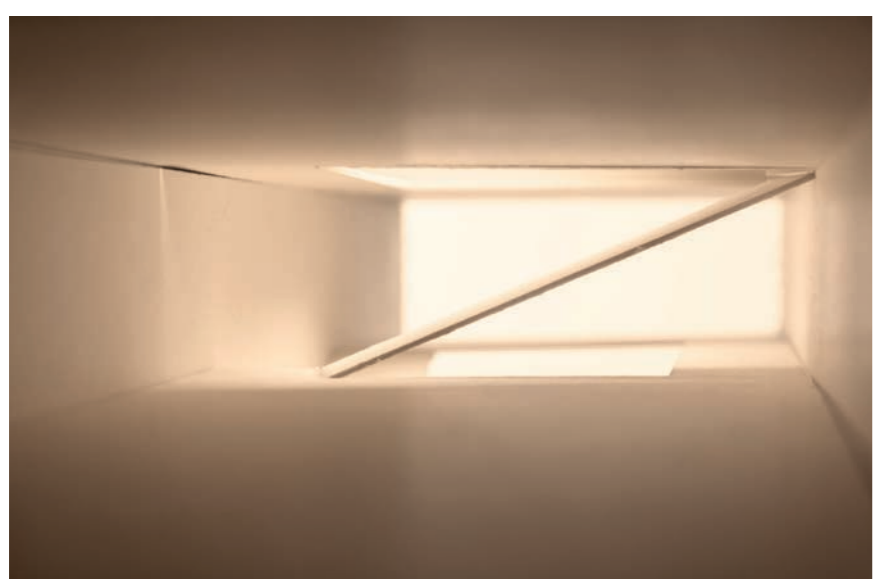
Schnitt B-B 1:100



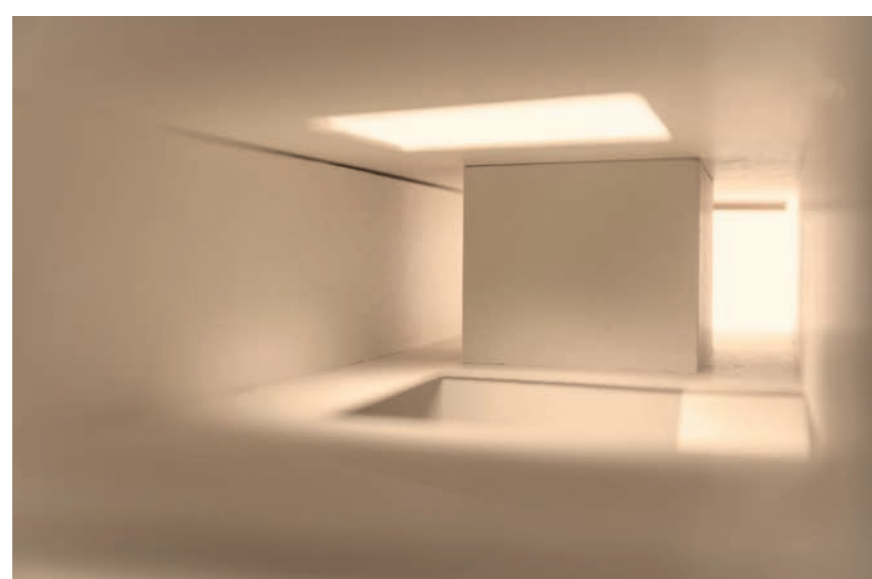
Ansicht West 1:100



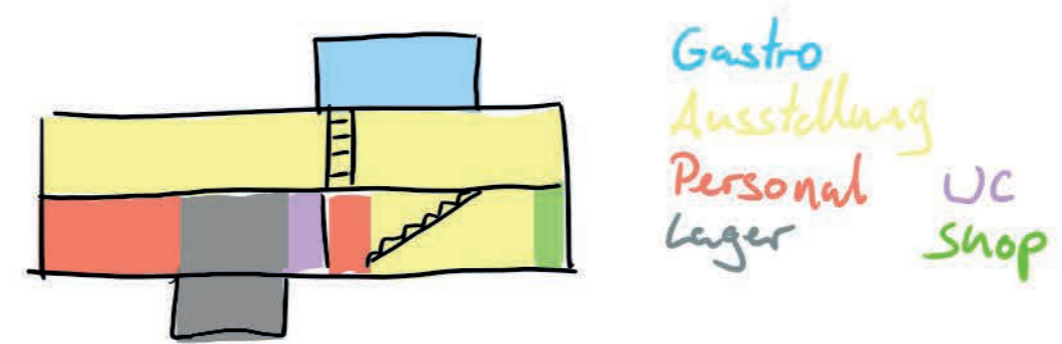
Ansicht Süd 1:100



1. OG Ausstellungsbereich Innenansicht



2. OG Gastronomie-Bereich Innenansicht



Raumkonzept



Aussenansicht Fotomontage